



10 Kenyon Lane

Prestwich, M25 1HY

Asking price £250,000

Welcome to your new home on Kenyon Lane in Prestwich! This charming three-bedroom semi-detached house boasts an ideal location within walking distance to Heaton Park and the Metro Station, ensuring convenience and easy access to local amenities.

Step inside to discover a spacious reception room seamlessly connected to a kitchen diner, perfect for hosting gatherings or enjoying cozy family meals. The three well-presented bedrooms offer comfortable living spaces, while a quaint courtyard garden provides a peaceful outdoor retreat.

Call HomeDaze to arrange your viewing

Viewing

Please contact our HomeDaze Manchester Office on 0161 691 1916

if you wish to arrange a viewing appointment for this property or require further information

- Semi Detached
- 3 bed
- Close proximity to Heaton Park Metro and Prestwich Metro
- Courtyard Garden
- Kitchen/ Diner
- CHAIN FREE



3



1

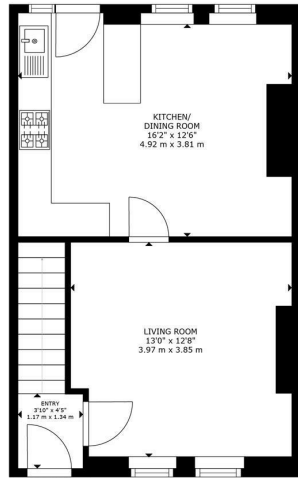


1



D

Floor Plan



FLOOR 1

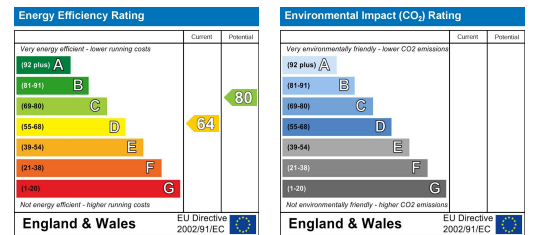
GROSS INTERNAL AREA
 FLOOR 1: 432 sq. ft, 40 m², FLOOR 2: 420 sq. ft, 40 m²
 TOTAL: 852 sq. ft, 80 m²
 SIZES AND DIMENSIONS ARE APPROXIMATE, ACTUAL MAY VARY.



Area Map



Energy Efficiency Graph



These particulars, whilst believed to be accurate are set out as a general outline only for guidance and do not constitute any part of an offer or contract. Intending purchasers should not rely on them as statements of representation of fact, but must satisfy themselves by inspection or otherwise as to their accuracy. No person in this firm's employment has the authority to make or give any representation or warranty in respect of the property.